

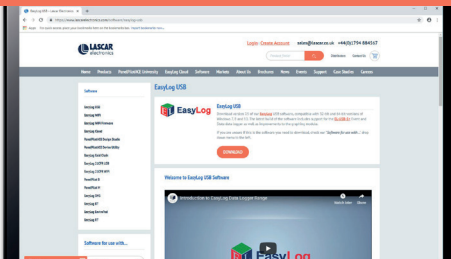


Quick Start Guide

DOWNLOAD AND INSTALL EASYLOG USB SOFTWARE

Windows™ 7/8/10 (32 & 64bit)

Visit www.easylogusb.com and click 'Download'. Once downloaded, install the software. You may need administrator permissions to do so.



USING THE SOFTWARE

- Insert the data logger into an available USB port on your computer.
- Double click on the EasyLog USB icon on your Windows™ desktop. This will load the configuration software. Click 'Set up and start the USB data logger' and follow the set-up wizard.



- When setup is complete, the data logger should be removed from the USB port. **Do not leave your data logger in the USB port for extended periods as this will cause some of the battery capacity to be lost** (with the exception of EL-USB-1-RCG as this is a rechargeable device).
- You can also download the data from a logger that has been recording or view previously saved data from the software. After doing so, remember to set-up and start your logger to begin a new logging session.

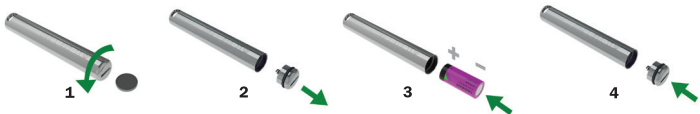
REPLACING YOUR DATA LOGGER'S BATTERY

Your data logger is provided with a 3.6V 1/2AA battery already installed. You can change the battery by following the instructions below.



EL-USB-1 PRO

Before using the data logger you will need to insert the 3.6V 2/3AA High Temperature battery provided, following the instructions below.

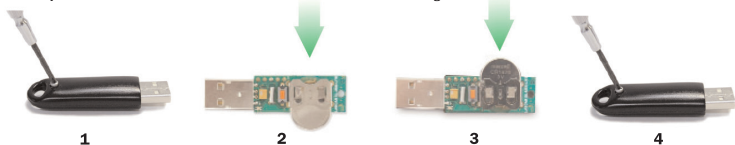


EL-USB-1-RCG

The EL-USB-1-RCG's battery is preinstalled. To charge the battery, connect to a USB port with a USB cable until the green LED shows. The rechargeable battery should only be replaced by an authorized supplier. Note that only the battery of the EL-USB-1-RCG is rechargeable. Do not attempt to recharge any other device.

EL-USB-LITE

We recommend that a new CR1620 battery is used if any low battery state is detected by the software or if a large proportion of the typical 30 day battery life has been consumed. Remove the screw. Pull the two halves of the case apart. Remove the old battery. Insert the new battery. Assemble the two halves of the case. Insert the screw and tighten.



EL-USB (excluding EL-USB-1-PRO)

	Green double flash The data logger is not currently logging, but is primed to start at a later date and time (delayed start).		Red single flash The data logger is currently logging. Low alarm.		Red and Amber double flash The data logger is full and has stopped logging. High alarm.
	Green single flash The data logger is currently logging. No alarm.		Red and Amber single flash The data logger is full and has stopped logging. Low alarm.		Amber single flash The battery is running low. Data logging will continue until the battery voltage drops below 2.8V.
	Green and Amber single flash The data logger is full and has stopped logging. No alarm.		Red double flash The data logger is currently logging. High alarm.		No LEDs flash The data logger is stopped, the battery is empty or there is no battery.

EL-USB-LITE



	Green single flash The data logger is currently logging. No alarm.		Red double flash The data logger is currently logging. High alarm.
	Red single flash The data logger is currently logging. Low alarm.		No LEDs flash The data logger is stopped, the battery is empty or there is no battery fitted.

EL-USB-1-RCG

	Green single flash (every 30s) The data logger is not currently logging, but is primed to start at a later date and time (delayed start)		Green single flash (every 20s) The data logger is currently logging. Low battery.		Green double flash (every 20s) The data logger is full and has stopped logging.
	Green single flash (every 10s) The data logger is currently logging. No alarm.		Red single flash (every 20s) The data logger is currently logging, however the battery is running low. Low alarm.		Red & Green single flash alternately (every 20s) The data logger is full and has stopped logging. High or low alarm.
	Red single flash (every 10s) The data logger is currently logging. Low alarm.		Red double flash (every 20s) The data logger is currently logging, however the battery is running low. High alarm.		No LEDs flash The data logger is stopped, the battery is empty or there is no battery.
	Red double flash (every 10s) The data logger is currently logging. High alarm.				

For a full product datasheet for your data logger
or for more information on the rest of the EasyLog range visit
www.lascarelectronics.com/data-loggers

Temperature

Temperature/
Relative Humidity

Voltage

Current

Event, State &
Count

Thermocouple

Carbon Monoxide

Thermistor



IMPORTANT SAFETY INFORMATION



Repairing or Modifying

Never attempt to repair or modify Lascar products. Dismantling them, other than for the purpose of changing replaceable batteries, may cause damage that is not covered under the warranty. Servicing should only be provided by an authorized supplier.



Disposal and Recycling Information

You must dispose of Lascar products in accordance with relevant laws and regulations. They contain electronic components and lithium batteries and therefore must be disposed of separately from household waste.

SALES & SUPPORT

UK T +44 (0) 1794 884567
E sales@lascar.co.uk

USA T +1 (814) 835-0621
E us-sales@lascarelectronics.com

HK T +852 2389 6502
E sales@lascar.com.hk

EasyLog www.lascarelectronics.com/data-loggers

Iss 14_02-2022

Disclaimer:

Every effort has been made to ensure the accuracy of this publication and no responsibility or liability can be accepted by Lascar Electronics Limited for any errors or omissions in the content of this document. Data and legislation may change, and so we strongly advise you to obtain and review the most recently issued regulations, standards, and guidelines. This publication does not form the basis of a contract.